

End-to-End

The Parish Magazine of Rivenhall and Silver End



On a cold and snowy night a visitor is seen in Fox Mead perhaps
they need to change the name of the Road to Badgers Set

March

2021

50p

The Following are services we hope to hold in March

7th March

9.30 am St Francis

11 am St Mary's

14th March

9.30 am St. Francis

11 am St Mary's

21st March

9.30 am St. Francis

11 am St Mary's

28th March

9.30 am St. Francis

11 am St Mary's

3rd Sunday of Lent

Private Prayer

Morning Prayer

4th Sunday of Lent

Private Prayer

Morning Prayer

5th Sunday of Lent

Private Prayer

Morning Prayer

Palm Sunday

Private Prayer

Morning Prayer

Church Contacts

Team Vicar Rev. Paul Watkin

Churchwarden Ann Clarke

Churchwarden Peter Hope

Rivenhall Contact Carole McCarthy

Silver End Contact Ruth Aitken

Rivenhall Website

St Francis Silver End Website

Rivenhall Website

St Francis Silver End Website

01376 583930 psgw100@aol.com

01376 514825

01376 502605

01376 512781

01376 583846

www.stmarysrivenhall.co.uk

www.st-francis.org.uk/

www.stmarysrivenhall.co.uk

www.st-francis.org.uk/

Contact the Editor 07904 235101 or phope02@gmail.com

Thoughts from the churchwarden (Ann)

These different times have given us all an opportunity to reflect on our lives 'so far'. I tell people, if asked, that I have been a life-long church member with lapses along the way. Lately I have been trying to remember my life and have started a notebook in which each page covers a year of my life. Some years are jam packed with memories – the year we got married, and the years when Sally and David were very young. My early life is not so clear, however, and I have tried to pinpoint certain events to see if they will trigger my mind. My first real memory is aged 5 $\frac{3}{4}$ and my sister was born, 1954. My Aunt and Uncle picked me up from school and we drove to Queen Charlottes hospital in London and brought home mum and my new baby sister Catherine. Once home I was presented with a new born doll and then happily copied mum as we cared for our new 'babies.' This leads me to my first church memory - her Baptism. My Godmother, Auntie Monica took me under her wing and we sat together at the back of the church. At one point when they started to sing she asked me what did I sing at Sunday School? I replied – Here we go Luby Loo! and happily sang away regardless! Our church was in the heart of the community and as I progressed through school, many friends were in the choir, but I preferred to help with the Sunday school. Then aged about 13, we were all confirmed following many classes at the vicarage. My last memory of that church is our wedding day in 1972; a very hot day in July. By then I was also a cub scout leader and many of them turned up as a guard of honour. The cubs were, of course, quite short, and the vicar proceeded to annoy my mother by insisting that all the cubs came to the front so they could see, never mind about the family!

Church then faded away as we moved to a different county to start our married life. I had a new job, and we had a new home. Within two weeks of moving in, a new Women's Institute Branch was opened on the Little Elms Estate, and, guess what! I was the first secretary! I have been on at least one committee all our married life.

We had the children and they were both baptised by Rev Nash. We lived on the Little Elms Estate which had been built in the late 60's, so in those days most of that estate came within the Parish of Rivenhall.

Then my Uncle died, for me the first of my parents' generation to pass, and it reminded me how much I needed the church. I can remember going up to our lovely churchyard and sitting and mulling over all my memories and yes, of course, crying. And so I returned to church, just me in those days. I sat in the congregation among Kate Dale, Miriam Whybrew, Vernon Butcher, Speedie Edie! And so many more.....

Like a chump I went to an APCM and was promptly voted on to the PCC. Gosh, so many memories come flooding back as I write this, but in 1988 Dot Lawrence handed over the treasurer's reins to me and the rest, as they say is history.

The point of this though, is to try to explain that I have been a life long churchgoer, and as such, mistakenly, some people think I know so much more than I do about scripture and the church. Over the years I have attended lent groups which have guided me through some of the books of the bible, but nowhere near all of them. A few years ago I attended a lent group in a different parish, and was surprised to find that people of other religions were attending. One lady in particular made a huge impression on me. Her friendship has led me to discover so much more about the bible and how to relate it to our lives today.

Since November I have been Zooming morning prayer on weekdays with other colleagues in our MMU; about 10 of us. Many days have a Saint allocated to it, and we read a few lines about their life.

Today, 23 February was dedicated to Polycarp, Bishop of Smyrna. Here is his resume:

Honoured as one of the first Christian martyrs, Polycarp had been Bishop of Smyrna on the Adriatic Coast of Asia Minor for over 40 years when the persecution of Christians began. He was arrested and given the option to renounce his faith and

so save his life. His response was: " I have served him for 86 years, and he has done me no wrong. How can I blaspheme my king who saved me?" He was burnt at the stake.. His remains were gathered together and buried outside the city; thus began the practice of celebrating the Eucharist over his burial place on the anniversary of his death. This custom also developed at the martyrs' tombs in the Roman catacombs. Polycarp died in about the year 155.

This short synopsis encouraged me to Google Polycarp and find out more.

Over the years I have been lucky enough to share with you some talks, and all of them without exception have been accompanied by research, and thus learning. As I reach the latter part of my life, and start to slow down, I am drawn to find more about, not just Christianity, but other religions as well and I listen to podcasts watch documentaries and read. I have collected so many books over the years, many of them bibles, different translations, and even this can teach you new ways to look at things. Some of us have started to read the bible in a year, We are about up to Leviticus, and Exodus has been a real eye opener. I have read one or two Gospels in full, but reading things in sequence can be very revealing. I would encourage you all to stop and take a moment to find out something new. Whether it is the bible, other religions, or maybe your favourite artist. Something that makes you stop and think and enriches your day.

Ann Clarke

P.S It is not too late to read the bible in a year, you can start at any time. Please contact me to have either a paper or an electronic copy delivered straight to you.

**From the Registers at St Mary's
Funerals
Gilbert Stott
Mary Smoothy**

Readings and Collects for February 2021

7th March 3rd Sunday of Lent

Readings

Exodus 20:1-17

1 Corinthians 1:18-25

John 2:13-22

Collect

Eternal God,
give us insight
to discern your will for us,
to give up what harms us,
and to seek the perfection we are promised
in Jesus Christ our Lord.

14th March Mothering Sunday

Readings

Exodus 2:1-10

2 Corinthians 1:3-7

John 19:25b-27

Collect.

Merciful Lord,
you know our struggle to serve you:
when sin spoils our lives
and overshadows our hearts,
come to our aid
and turn us back to you again;
through Jesus Christ our Lord.

21st March 5th Sunday of Lent

Readings

Jeremiah 31:31-34

Hebrews 5:5-10

John 12:20-33

Collect

God of love,
passionate and strong,
tender and careful:
watch over us and hold us
all the days of our life;
through Jesus Christ our Lord.

28th March Palm Sunday

Readings

The Liturgy of the Palms

John 12:12-16

The Liturgy of the Passion

Isaiah 50:4-9a

Philippians 2:5-11

Mark 15:1-39:(40-end)

Collect

Gracious Father,

you gave up your Son

out of love for the world:

lead us to ponder the mysteries of his passion,

that we may know eternal peace

through the shedding of our Saviour's blood,

Jesus Christ our Lord.

The 50/50 Club February 2020 winners

1st A. Green

2nd K. Cockrell

3rd J. Bell

RIVENHALL PARISH COUNCIL

NOTES OF COUNCIL MEETING HELD ON 2ND FEBRUARY 2021

HELD ELECTRONICALLY DUE TO THE COVID-19 HEALTH RESTRICTIONS - all councillors took part via email.

These notes are an abridged version of the minutes.

Matters for Discussion

PAYE Payroll

The current provider will cease their provision on 31st March. Members **agreed** to accept the best quotation received from a new provider which offers everything that's required for salary calculation, payslips and PAYE.

Feedback from 3 Parishes Zoom meeting

The Chairman, Vice-Chairman and the Clerk attended the Zoom meeting along with representatives from Silver End and Cressing Parish Councils. Cooperation on local major planning

applications and progress on the 3 Parishes tree planting project were discussed. The next meeting is scheduled for 24th May at Silver End.

Highway Maintenance

The repeated flooding at four locations has again been raised by the Chairman with ECC. ECC has responded to say that they have been 'inundated' with requests across Essex due to the prolonged wet weather over the winter. The Chairman has requested, and it has been arranged, for a Zoom meeting with the ECC Cabinet Member for Highways and his officers. The main items to be discussed will be blocked drains and pipes and the private land sources of water causing most of the flooding - and how that can be stopped.

(Post meeting note: ECC has said it aims to clear all the blocked gullies and pipes by early March and that a site meeting will be held at the John Ray Walk to look at the issues there, once Lockdown ends).

The Chairman has written to Highways England asking how long the A12 southbound junction closures will last following concerns raised by residents at the length of time the work is taking. *(Post meeting note: The works are now complete and the junction is open).*

The numerous malfunctioning streetlights in the Parish have been reported to ECC, which has agreed to attend to the Rivenhall End ones first, which will need to be done at night.

Members raised concerns about the deterioration of the condition of local roads. Due to the ongoing poor weather conditions the ECC pothole repair programme has again been revised and new dates for road closures have been advised by ECC. These dates are being posted to the local community facebook page as they become known.

General Maintenance

Concern was raised by Members about the amount of litter being dropped along local roads. The new litter picker has been asked to attend to this and BDC has been advised. Volunteer litter pickers continue to work in the parish to clear

litter and their efforts are much appreciated.

Planning Applications

Responses to BDC to the following planning consultations were all made with 'No Comment' from the Parish Council:

20/02125/HH: 304 Rickstones Road.

20/02106/HH: 309 Rickstones Road.

20/02130/HH: 4 Foxmead.

20/02210/NMA: 451 Rickstones Road.

21/00031/OUT: Industrial & Distribution units – Burghley Brook Farm. Comments were sent to BDC requesting additional boundary screening.

CC/BTE/02/21: Two-storey SEND building for Southview School. Comments were sent to ECC about parking concerns along Conrad Road.

Planning results

20/01767/HH: 461 Rickstones Road – Rear and side extensions. Application refused by BDC.

CC/BTE/138/20: Temporary access to SEND construction site at Rickstones Road. Application approved for 12 months duration by ECC.

Planning Enforcement

Some work has now taken place to rectify planning enforcement matters raised with Bellway regarding their housing development site off Rickstones Road, but other issues remain outstanding including the bridge built of scaffolding poles in Rectory Lane.

Ongoing Planning Issues

A12 to A120 widening

A12 – Members noted the need to continue to press Highways England for measures to prevent HGVs using Oak Road to/from the new A12 road arrangements and for clarity on the access roads that will be built.

BDC Local Plan

Final adoption of Section 1 is due to be considered by BDC at its meeting on 22nd February. The Section 2 Examination is expected to commence in July 2021.

Colemans Quarry

The next Quarry Liaison meeting is due on 3rd February.

Post meeting note - *The Colemans Quarry Liaison Group met at the quarry with reps from Brice Aggregates (BA), ECC, Little Braxted and the Chairman, Cllr James Abbott, present.*

The Ready-Mix Concrete Plant (including 2 tall towers), is already operating but it emerged at the site meeting that this plant does not yet have full planning approval (although that is pending with ECC). There are likely to be 2 further planning applications this year which could have implications for the future of the site and various impacts on the areas affected including Rivenhall and Witham, especially from HGV traffic.

BA say they intend to apply for an extension of the quarry. This application will cover land currently subject to archaeological trial trench digging. This extension to the quarry covers land on the route of the new A12 as the operators want to extract sand and gravel before the A12 roadworks start.

But it remains uncertain as to when the A12 works at Witham/Rivenhall End will start - Highways England say the start will be in late 2023 but work will not be starting along the whole route from Chelmsford to Colchester at the same time and also the main planning process has not yet started.

The second planning application expected is for the commencement of waste operations at the quarry. This waste would initially be used to fill the voids on the route of the new A12. The waste would be "inert waste" which covers a wide range of types. BA stated at the meeting that it would include clays, soils and construction waste such as brick and concrete rubble.

The operators also stated that they intend to set up a concrete crushing operation. The approximate amount of waste would be 1 million tonnes for the A12 route filling, but the operators also indicated that they intend to carry on with the waste operation after the A12 has been built.

To bring in the waste, BA say they want to increase the HGV movements to nearly 200 per day - about three times the level originally granted. This raises more questions as the operators say

they will continue to use the Little Braxted Road entrance at the Coleman's Bridge interchange, but that junction will be completely removed and replaced as part of the A12 rebuild.

The original planning consent ruled out waste being imported and proposed low levels of HGV movements with full restoration of the land using only the locally excavated soils and a restoration mainly for wildlife benefit.

At the site meeting, local reps asked about the deteriorating condition of the junction of Little Braxted Lane and Coleman's Bridge. It was asked as to whether the quarry operators should be required to pay for repairs.

Braintree Local Highways Panel

The Chairman reported that the meeting had taken place as scheduled on 28th January. No further schemes could be recommended to go ahead as the Panel has no funds available until the 2021/22 budget is confirmed by ECC. The next meeting will be in March. The Chairman had thanked all concerned at the January meeting for the work on design, funding and installation of the new HGV height warning signs in Rivenhall.

Information exchange and items for the March agenda

The RPFA hall booking officer had unfortunately died in January. Members were saddened to hear this news and the Clerk had sent a letter of condolence to her husband.

EALC have advised the Clerk that the Annual Meeting will be able to go ahead whether face-to-face or electronically, in line with any Government Covid Restrictions that still apply. Any advertising for the Annual Parish Assembly will have to include a caveat that it can only go ahead if legislation allows, at the moment Regulations do not allow for gatherings until after 6th May 2021.

Dates of future meetings

2nd March and 6th April 2021 but both may be convened electronically.

I recently made these and got much pleasure from the kneading! Enjoy.

(Hang on Ann I'm the only one who's allowed to do Puns!! Editor)

Ingredients

For the cinnamon bun dough

- 100g/3½oz unsalted butter
- 200ml/7fl oz milk
- 1 tsp salt
- 250g/9oz plain or wholemeal plus extra for dusting
- 250g/9oz strong white flour
- 1½ tsp fast-action yeast
- 1 tsp ground cardamom (optional)
- 4 tbsp caster sugar
- 2 free-range eggs
- olive oil, for greasing

For the filling and topping

75g/2½oz unsalted butter, softened

100g/3½oz caster sugar

2 tbsp cinnamon

1 free-range egg, beaten

1. In a small saucepan heat the butter, milk and salt until the butter is melted. Allow the mixture to cool until it is lukewarm.
2. In a large bowl, stir together the flours, yeast, cardamom and sugar until combined. Make a well in the centre and crack in the eggs. Pour in the lukewarm milk mixture and stir everything together to form a sticky dough. You may have to use your hands as the dough becomes stiffer.
3. Oil the work surface with a teaspoon of olive oil. Turn the dough out onto the oiled surface and knead vigorously for 5-8 minutes, using a plastic scraper as needed to prise the dough from the work surface. Don't be tempted to add flour, as this will make the buns dry and tough. Keep kneading until the dough is considerably less sticky, smoother and more elastic. Shape into a ball, and put into a large, greased bowl. Cover the bowl with a clean tea towel and set aside in a

warm place to prove for an hour, or until doubled in size.

4. Meanwhile, for the filling and topping, mix the softened butter in a bowl with half the sugar and 1 tablespoon of cinnamon. Use a fork to mix the sugar and spice into the butter until it is completely combined. Mix the remaining sugar and cinnamon in a separate bowl and set aside.
5. When the dough has risen, turn out onto a floured work surface and gently roll out into a 36x24cm rectangle. Spread the cinnamon-sugar-butter evenly over the dough with a table or palette knife.
6. With the longest edge closest to you, roll the dough up into a cylinder. Cut into 12 even slices.
7. Place each slice onto a flattened out paper cupcake case on a baking tray, or into a greased muffin tin. (Baking in a muffin tin will make your cinnamon buns taller and domed.) Cover with a clean tea towel and set aside to prove again for 30-45 minutes, or until risen.
8. Pre-heat the oven to 200C/180C Fan/Gas 6.
9. Brush the tops of the buns with beaten egg and dust liberally with cinnamon sugar. Bake for 12 minutes until the buns are dark golden-brown. Enjoy warm with a cup of coffee.



JUNE RAYNER 1938 -2021

JUNE RAYNER 1938 -2021

We were all devastated to hear that within days of each other Rickstones Road lost two of its well known residents, next door neighbours Pauline Marshall and June Rayner . They are both a sad loss to their families and to our community.

June was a local girl, born in Witham, and she married local boy John in 1958. June kept an immaculate house herself, and was also home help to several families in Witham and Rivenhall. For over 30 years she helped Lillian Pearce at Rivenhall Hall Farm, as well as helping Jackie Allan and Jenny Joles, taking especial delight in their young children. June travelled around on her scooter with L Plates for many years until the rules changed and a test would have become necessary. She was a very accomplished knitter, producing many fine garments, and she enjoyed relaxing with a jigsaw.

June was very much a family person, maintaining close links with her brothers and sisters, and of course son Stephen and his wife Tracey. Kind hearted and practical, she was always there to lend a hand to those in need. She was also an enthusiastic supporter of Rivenhall's community activities. Her smiling face would always be there at the race evenings and the Christmas carol singing on the village green, often accompanied by her sister-in-law Mary and in earlier days her brother Kenny. She and John were members of the Gardening Club, and June was a regular attendee at bingo evenings, the indoor bowls club, the monthly cinema shows and the Friday coffee mornings.

In 2018 June and John celebrated their 60th wedding anniversary and June's 80th birthday, a shared event with Mick Marshall's 70th birthday. Tracey created a beautiful cake for the occasion. The highlight of the celebration was a congratulatory card from Her Majesty the Queen which had been skilfully organised by Pauline Marshall.

When the various activities re-start in the village, the cheerful presence of June will be greatly missed by her many friends. Our condolences to John, Stephen and Tracey.



June Rayner



**CONNECTED CABS
WITHAM**

01376 317777




 **Wheelchair Accessible**

All fares fixed price (no meters)

Card payments accepted in cars



Aerial Photography	COST EFFECTIVE, SAFE ACCESS, ROOF TOP INSPECTIONS BY DRONE WITH NO NEED FOR SCAFFOLD, TEMPORARY WORK OR STRUCTURES REQUIRED.	Historic Buildings Monitoring
Barns		Building Inspections
Chimneys		
Roof Tops	<p>NON DISRUPTIVE, FAST AND PROFESSIONAL SERVICE, SAME DAY REPORTS AND RECOMMENDATIONS FOR REPAIRS</p> <p>FULLY CAA AND CIOB REGISTERED, QUALIFIED AND INSURED SERVICE. CARRIED OUT BY EXPERIENCED SURVEYORS.</p> <p>Call to discuss your requirements; Chris; 07817219133 Jim; 07966403783 email; highsightse@gmail.com</p>	Estate Records

Prices from Witham:-

Hospitals

Broomfield	£22
Colchester General	£25
Springfield	£18
St Peters/ Braintree	
Community	£15
Maldon	£15

Airports

Stansted	£40
Heathrow all Terminals	£96
Gatwick	£95
London City	£75
Southend	£50
Loton	£95



And the Ice and Snow keeps giving with these wonderful pictures from Rob Fossett (On the Cover) and Karen Dakin





Here the "Sea" at Goldhanger Creek Froze over Saturday Feb 13th



The rope swing in thw wood at Rivenhall in the Snow and last summer Rope swing with Char-lie thanks to Karen for these lovely pictures.



Sky Notes March 2021

On Saturday 20th March we reach the Spring Equinox when day and night are roughly equal across the world. This is also the time of year when daylight hours expand at the fastest rate at our latitude. In the week following the Equinox we gain nearly half an hour of daylight.

Clocks go forward an hour to British Summer Time on Sunday 28th March at 1am.

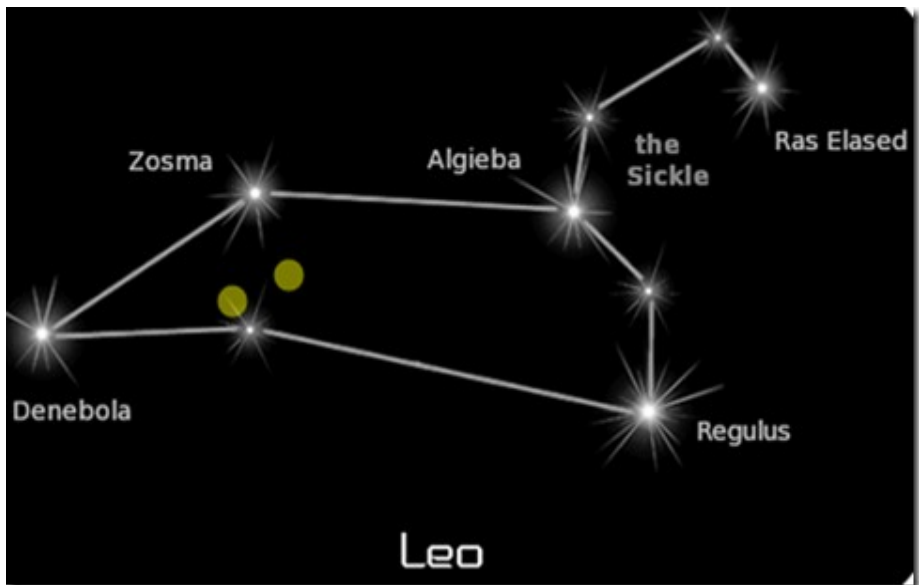
Most of the brighter planets remain clustered in the sky near the Sun and so are difficult to spot. Mars though can still be seen during the evening, drifting slowly from night to night through the constellation of Taurus. On 18th February NASA made a successful landing on Mars with its Perseverance Rover at Jezero Crater. It is believed the billions of years ago this crater held a large lake of water and so is a good target for the mission to search for evidence of life that may once have existed on Mars.

The March Full Moon will be on the 28th and so the mid-month period will be best for stargazing.

Vesta is the brightest asteroid and is very well placed during March. For those that have never seen an asteroid, this month brings a good opportunity due to the position of Vesta. Looking to the East during the evening one of the most familiar constellations is Leo, with its 'backwards question mark' shape of stars known as The Sickle. Towards the left side of the main pattern of stars, as shown below, is a triangle of stars. Vesta will be just above and slightly to the left of one of these stars (as shown marked by a circle) on 7th March, moving night by night to the position of the circle to the right by March 17th.

To see Vesta, binoculars will be needed and it will look like a star. Space probes have revealed it is a potato-shaped object several hundred miles across and is the second largest object in the asteroid 'Main Belt' between Mars and Jupiter. Vesta was discovered in 1807 and at that time was the 4th asteroid to be found. Today the number of asteroids known to exist in the Main Belt is approaching 1 million and there may in total be double that number of asteroids there that are larger than 1 kilometer across.

Sky Watcher



Female Brimstone



Male Brimstone

These Pictures accompany
the Nature Care article in the
Magazine

ANGLIA TREE SERVICES

Specialist tree surgery

Residential & Commercial Customers

CROWN REDUCTION • FELLING • TOPPING

HEDGE TRIMMING • ALL GARDEN WORK

STUMP GRINDING

For a quick, tidy and friendly service call:

Tel: 01621 892831



7 DAYS A WEEK • EMERGENCY SERVICE AVAILABLE • FULLY INSURED



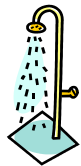
Philip Little

Property Maintenance Magician

Local service at local prices

Knowledgeable and friendly

07973 129808 or 01376 515257



Serving the Local Community for over 125 Years

G. COLLINS & SONS

Funeral Directors Ltd



30 RAYNE ROAD, BRAINTREE, CM7 2QH

01376 342266

4 THE STREET, WHITE NOTLEY, CM8 1RH

01376 583750

WWW.GCSFD.CO.UK

Beautiful Rooms For Rent In Witham & Braintree

We have 4 Lovely houses
2 in Witham—2 in Braintree
With and Without en-suites
£90—£130 per Week

(All inclusive of Rates, Light, Heat, and with Broadband)

See our Website:- www.jbwpartners.co.uk

Or Call

John
07850 161629

Mavis
07714 579783

Michelle
07966 323914

**HELP WITH
FUNERAL ARRANGEMENTS
RICHARDS
FUNERAL SERVICE**



01376 513114

78 Newland Street, Witham, CM8 1AH

From advice on how to register a death to making all the arrangements, we're here 24 hours a day.

Members of the National Association of Funeral Directors
A British Owned Company www.dignityfuneral.co.uk

SpeedyBroadband.co.uk
***Sick Computers my
Speciality***

- Home Networking Problems Sorted Out
- Computer Viruses Removed
- Operating System Upgrades
- Upgrade to Windows 10

**FOR YOUR FREE SURVEY AND
QUOTATION CONTACT**

Peter Hope

peterhope@speedybroadband.co.uk

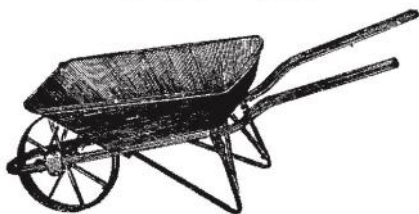
Tel: 01376 502605

Mob: 07904 235101

Website

www.speedybroadband.co.uk

**Ya Garden
Cares**



**Thorough Attention on
Bed Maintenance,
Mowing & Clearance**

**Telephone
Barry: 07732337626**

FOOT HEALTH PRACTITIONER



HOME VISITS



NAIL
TRIMMING
CORNS
CALLUS
THICK NAILS
HARD SKIN

COVERING:
Chelmsford
Witham
Danbury
Stock.....

JAMES NEWMAN (MCFHP,MAFHP)

TELEPHONE: 01376 519036

MOBILE: 07793971351



**CARING FOR THE PETS OF WITHAM AND
THE SURROUNDING AREA FOR 25 YEARS**

SPECIAL O.A.P. SURGERY THURSDAYS

CAT ONLY CLINIC WEDNESDAYS

Late night surgery Wednesday till 8pm

**Surgery Opening hours
Monday to Saturday for appointments**

Tel: 01376 500038

www.brookendvets.co.uk



PC Doctor
Operations Limited

**For all your computer
requirements including:**

Virus prevention, detection & removal
Broadband, Networking, Wireless & Firewall set up
Email & SPAM filtering
Hardware Repairs & Upgrades
Software Faults & Crashes
Backup Solutions & Data Recovery
Software Installation & Removal
Hardware & Software Supplied
Website Management • Computer Training

**Health
Checks
£39.99**

Office: 01621 891064 • Mobile: 07990 565336

Email: support@pcdocops.co.uk

Website: www.pcdocops.co.uk

Monthly subscription service available to provide complete "peace of mind" and allow you to spread the cost of your IT requirements.

Please contact for further information.

REYNOLDS CARPENTRY SERVICES

**For all Carpentry, Joinery
& Cabinet Making Requirements**

CSCS Registered

30 Years Experience

4 Years Apprenticeship

City & Guilds and

Advanced City & Guilds Qualified

Free estimates – No obligation

All building work considered

Can also make items to order

also

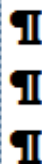
**'curtain poles, tiling, flat packs,
kitchens, doors, sheds etc, no jobs
too small'**

Contact

07889 110962

Answer phone at other times

Jeremy Larke Television services



Telephone: 01376 513645

Mobile: 07947 601619

Email: telerepair@aol.com

All Television Systems Catered
for Freesat, Freeview, Sky.

- Installations & Repairs To all makes and models
- Full Plasma & LCD Fitting Service
- Wall Mount Brackets Supplied and Fitted
- Aerial & Satellite Dishes Fitted
- Freeview, Freesat & European Channels
- View and Control Your Sky in Other Rooms
- Aerial and Telephone Extension Points Installed



Don't Delay Call Today

Janet C Davies

Dip. F.D. M.B.I.F.D

**BRAINTREE & KELEVEDON'S LADY FUNERAL
DIRECTOR**

Offering a full and Comprehensive Funeral Service

Telephone 01376 339300

For a Personal and Caring 24 hour service

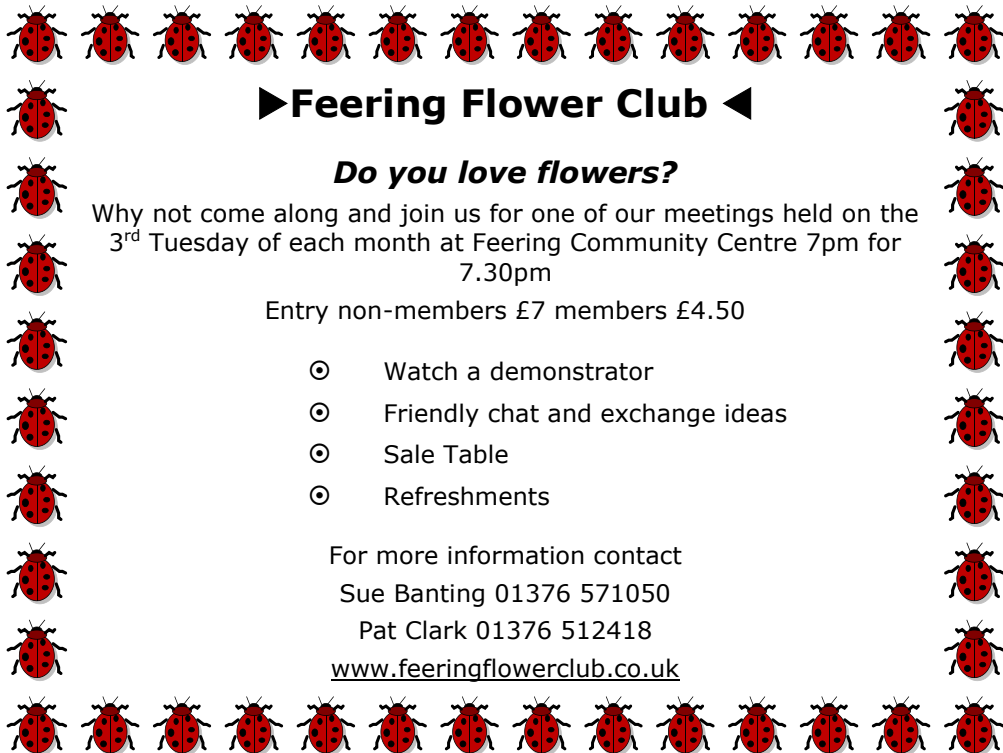
Local Chapel of Rest at Fern House 72 Coggeshall Road Braintree and
Victoria House, Trews Gardens, Kelvedon

Funerals are arranged and carried out in the Traditional Manner but
With 'The Gentle Touch'

Pre payment Plans available—Floral Tributes arranges—Woodland Burials
Bereavement Care—Low Cost Simplicity Funerals - Memorials—Printing
Catering—DWP Funerals

Part of the Hunnaball Family Group

Members of the National Association of Funeral Directors



►Feering Flower Club ◀

Do you love flowers?

Why not come along and join us for one of our meetings held on the 3rd Tuesday of each month at Feering Community Centre 7pm for 7.30pm

Entry non-members £7 members £4.50

- ⊙ Watch a demonstrator
- ⊙ Friendly chat and exchange ideas
- ⊙ Sale Table
- ⊙ Refreshments

For more information contact

Sue Banting 01376 571050

Pat Clark 01376 512418

www.feeringflowerclub.co.uk

DANIEL ROBINSON & SONS

Incorporating
W C BROWN & SONS

Independent Family Funeral Directors & Monumental Masons

A professional, caring, 24 hour service

Private Chapel of Rest

Fleet of air conditioned limousines

Horse drawn funerals available

Traditional and contemporary funeral services to suit your wishes

Funeral pre-payment plans

Arrangements may be made in the comfort of your own home, if preferred

Haslers Lane
Great Dunmow
Tel: (01371) 874518

7 Manor Street
Braintree
Tel: (01376) 320582

31 High Street
Halstead
Tel: (01787) 475533

www.drobinson.co.uk

Turning the pages of History

Research by Tracy Scott

Looking back on history means different things to everyone, but what do you call history...is it what happened this morning, last week, a year or a few, the Normans and other invaders to our islands, political and religious changes, the Twin Towers, World Wars etc., and of course births, deaths and marriages....

At the moment we are all making history of a different kind over the year with this Pandemic. Staying at home, mask wearing and washing our hands like never before. Of course in the last few months having society here in the UK and hopefully throughout the world an array of vaccines to make our lives much safer to get back to normal living again. So what has this got to do with you and history?

As the title says 'Turning the pages of History' I spend much of my time looking into news press going back as far as I can, from papers, parish magazines and other articles. I consider myself and many others like me that at this time very lucky as most of this is now available at a few touches on a keypad. But I still rely on the large collection of parish magazines that my Mother did not throw out and many other books and pamphlets I have obtained over the years. Myself, I like to have a borderline on where History starts for me and that is 50 years pass and beyond. This is where in 2071, 50 years on in the future all of our society and the world will look back in the records of how we really coped with this Pandemic and they will be turning back pages of History of their own.

So let's now look back 50 years to the Parish News magazine of March 1971 where our Reverend David Nash was turning back the history pages himself and looking at the Parish magazines in the time of our Rector the Reverend Herbert H. Willmott who joined our parish in 1897. The first one from 1900 is where Rev. Willmott actually looking back himself 50 years hence to how things have changed at Eastertime.

In May 1900: "Good Friday: - This solemn day is still very indifferent observed, and the old bad traditions of half a century ago still have their influence. The way Good Friday is treated by many is, to say the least, indecent. Some pursue their ordinary avocations, others spend the day n cycling, feasting and such-like amusements, and worse still at the public house, emptying their pockets of their hard-won earnings and addling their brains with intoxicating liquors. One would think they had no God to serve and no souls to save, that there were no heaven to gain and no hell to escape".

March 1901: "We do not remember to have seen Ash Wednesday less observed than it was this year in Rivenhall. Indeed, the only conclusion we can come to is that many people forgot all about it. It is misfortune that failure of memory should have been so widespread".

May 1903: "On the Thursday evenings in Lent a very helpful course of instructions on "Temptation" were given by Rev. Oscar D. Watkins, M.A., Rector of St. Martins, Colchester, late Archdeacon of Lucknow. The preacher thought the attendances good, but we, who know what Rivenhall CAN do, are not quite of the same opinion. If people would realise the duty (or shall we say privilege)...many who were conspicuous by their absence would have been seen in their places as usual, the attendance on Good Friday was unsatisfactory".

Rector Nash added to this: Back to 1971:- You know I am increasingly wondering if the great 'Golden Age of Churchgoing' myth has been expanded by the devil so that we can say "This is what they did in old-fashioned times, but we are modern!" I think that our present Lenten Services are a 'break-through' in Lenten observance.

Lockdown Perambulations

Being a keen walker, backpacker and camper, the last twelve months have been somewhat frustrating for me due to restrictions on travel for much of that time. So whether it

was for exercise and well-being, or simply for a change of scenery or out of idle curiosity, Jane and I have strolled much of our parish and its surroundings from our home in Rivenhall End.

On our circular walks we often see dog-walkers in the countryside, most often these are Laura and Tessa from Rivenhall or Peter and Sarah with their dog Charlie from Rivenhall End, but it is always a pleasure to stop and chat to whoever we may meet.

Sometimes we cross the River Blackwater at Great Braxted Mill and go up to Kelvedon Hall Farm or round Braxted Park. Other times we cross the river at Little Braxted Mill and explore the areas by Broomfields Farm.

Often we take various routs that lead to "Peter's" field of Alpacas on Snivellers Lane near Kelvedon. Alternatively we have ventured through Rivenhall Hall and walked over to Parkgate Road and by Felix Hall before returning by the rear of Hoo Hall.

Our routes vary: sometimes they might be just a couple of miles long, other times we may go for seven or eight miles. We are most fortunate to have a pretty good Right of Way network though with all the winter rain, some of these did become somewhat "squidgy"!

A recent excursion took us via Rivenhall Thicks, across to Western Lane then by the delightfully restored Rivenhall Place which we could see in the distance through the trees, with its beautiful lake back-drop. It is always good to get outside. As the noted fell-walker Alfred Wainwright said "There's no such thing as bad weather, only inappropriate clothing"

I see many Violets are now in flower and it will not be long before the Bluebells appear, especially in our woodlands (always a welcoming sign of Spring). In the last few days we heard encouraging words about the easing of our Covid 19 restrictions. Doubtless many will soon be thinking of planning holidays and travelling once more. By all means do so when you can, but also remember that around us is some

lovely countryside and much wildlife if you wish to keep an observant eye out for it - and it is totally free!

End to End Nature Care.

Unless you have been taking Covid shielding to the extreme you will not need to be told that, until the latter part of last month, 2021 has been a very wet year indeed. While temperatures have been fairly average on the whole, over the course of the winter parts of eastern England have experienced more than double the average amount of rainfall and everywhere in the region has had an increase of at least 50% above average. Having also had a cold snap in February, which benefits many native plants and seeds, we can hopefully look forward to a verdant and invigorating spring.

Signs already abound as I am sure many of you will have noticed when going about your daily exercise or staring wistfully out of your house windows. As well as the more municipal signals – snowdrops then daffodils, crocuses and the like – some of the deciduous hedges are beginning to green up while many of the woody plants, both shrubs and trees, are in leaf bud and also flowering. Catkins abound. With the consequent availability of nectar and pollen, many insects are already on the wing including all the usual early bee and fly species, many of which are only seen in spring.

Overwintered insects such as ladybirds and some butterflies can emerge from their slumber remarkably quickly. I saw my first Brimstone butterfly (*Gonepteryx rhamni*) of the year fluttering by a roadside verge near Colchester Zoo on 21st February. Perhaps more than any other sight this is always symbolic to me of the end of winter. Being vividly bright yellow (hence the vernacular name) and very active when the temperature is high enough, the males really stand out against the still largely bare and drab hedgerows. Sexual dimorphism (clearly visible difference between males and females) is not uncommon in butterflies and the female

Brimstone is much paler, almost white; if only glanced she could easily be mistaken for a Large White (*Pieris brassicae*), sometimes seen as early as March though they tend to be more common in the summer. There is also a bright yellow moth known as the Brimstone (*Opisthograptis luteolata*) though it does not overwinter as an adult and emerges a little later in the year. The moth will usually pass through two generations of adults each year whereas the butterfly may appear to, but the adults seen in late summer are actually those which will hibernate to emerge again early the following spring. The butterfly caterpillars live and feed on Buckthorn (*Rhamnus cathartica*) and Alder Buckthorn (*Frangula alnus*) so if you would like to support this lovely species you might consider planting one of bushes in your garden.

“Herps” (reptiles and amphibians) are active and many, the amphibians in particular, will have mating as their top priority in the spring. Some ponds may already have masses of spawn in them, less than a month since they were completely frozen over for the best part of a week. Common Toads (*Bufo bufo*) often spawn earlier than Common Frogs (*Rana temporaria*) and in larger bodies of water, though they may also take advantage of smaller ponds or even just wet ditches. Unlike frogs, once they have spawned toads will usually leave the water body itself and spend the summer in small territory, hunting nocturnally for invertebrate prey. Some lucky gardeners may host resident toads which will help to control slugs.

The birds one sees seem to change dramatically too. On one of the first warmer, sunnier days after the cold snap last month there were Greenfinches (*Carduelis chloris*) and Goldfinches (*Carduelis carduelis*) in the trees at the bottom of my garden, neither of which I had seen there since way before Christmas. This is well before the influx of familiar summer migrants such as the various warblers, the Barn Swallows (*Hirundo rustica*) and the martins, though some of the populations of resident birds may have increased through shorter-range migrations.

If you see any plant or animal which you find interesting or would like to find out more about, do let us know. We would love to hear if you have frogspawn in your pond or perhaps you find a toad or newt. Maybe you have spotted a Brimstone (butterfly or moth). You can contact me via simon@e2e.silverend.org or on 07947 388180, or please do join and post on our "End to End Nature Care" Facebook group <https://www.facebook.com/groups/767416983842784>.

Simon Taylor



THIS FAIRTRADE FORTNIGHT...

**It's time to
choose the
world you want.**

You're invited to
our online event!

**FAIRTRADE FORTNIGHT
22 FEBRUARY – 7 MARCH**



Essex Police Fraud Alert System

21st February 2021

VACCINATION SCAMS CONTINUE!

Following on from the previous alert regarding vaccination text messages, there is a new fraudulent vaccination email being circulated. Again, this looks very convincing and could easily be mistaken for a genuine NHS email.

Do not click the link as it takes the recipient to a malicious website that steals personal details. These details are then used by the criminals to access other personal accounts.

Remember:

- Never click on any links in unsolicited emails
- Check the email address is genuine by hovering over it or clicking and holding
- The vaccine is free and the NHS will never ask you for bank or payment details



If you or someone you know is vulnerable and has been a victim of fraud, please call **Essex Police on 101**
Report fraud or attempted fraud by contacting **Action Fraud** at actionfraud.police.uk or call **0300 123 2040**

Keep up to date with fraud and
do **even more** Online at essex.police.uk



This ones for Martyn Scully he will no why

I just found some change in my pocket from the last time I went out!



A vegan said to me once people who eat meat are disgusting.

I replied that people who only eat vegetables are Grocer.

I got carried away playing **Scrabble** last night and swallowed a handful of tiles. I'm worried that could spell DISASTER

If you think you are smarter than the previous generation!

50 Years ago the owners manual of a car showed you how to adjust the valves.

Today it warns you not to drink the battery water.

The Bathtub Test

During a visit to my doctor, I asked him, "How do you determine whether or not an older person should be put in an old age home?"

"Well," he said, "we fill up a bathtub, then we offer a teaspoon, a teacup and a bucket to the person and ask them to empty the bathtub."

...

"Oh, I understand," I said. "A normal person would use the bucket because it is bigger than the spoon or the teacup."

"No" he said "A normal person would pull the plug. Do you want a bed near the window?"

ARE YOU GOING TO PASS THIS ON ... OR DO YOU WANT THE BED NEXT TO MINE?

Beer is like the Sun it rises in the Yeast and sets in the Waist

100 years ago everyone had a horse and only the rich owned cars. Today everyone has a car and only the rich own horses.

My how the Stables have turned.



Organisations in Rivenhall

Clerk to Parish Council	Keith Taylor	516975
Email parishclerk@rivenhallparishcouncil.net	meets every first Tuesday	
End to End Nature Care	Simon Taylor	01621 810141
Gardening Club	Carole McCarthy	512781
Meets on 2nd Tuesday at 7.30pm in Village Hall		
Carpet Bowls	Mick Marshall	512836
Meets every Thursday at 7.30pm in Village Hall		
Playing Fields Association	Mick Marshall	01376 512836
Spread Your Wings Dance Acam	Laura Pearson	01376 741317

Facilities

Hire of Village Hall	Pauline Marshall	01376 512836
Or email rivenhallvillagehall@gmail.com		
Hire of Henry Dixon Hall	Tracy Scott	571551
Mobile Library 13 April 4 May	Beech Road	9.20 to 9.50. a.m.
Oak Store Rivenhall "Open All Hour" Tel AJ		01376 538838

Organisations in Silver End

Clerk to Parish Council	Mrs B. M. Temple	618464
Email parishclerk@silverendparishcouncil.gov.uk		
Bowls Club	Paul Mann	07551 006906
Children's Centre	Faye Savage	587960
Neighbourhood Police	Braintree Policing Dial	101
Congregational Church	Sharon Gray	583913
Friendship Club	Maureen Green	585275
Silver End Gad Abouts	Denise Sullens Smith	07952 992782
Gardening Club	Liz Woor	585586
Guiding Group	Carol Hutchings	07857 663959
Neighbourhood Watch	Judy Hill	07896 975839
Scouting Group	Denise Sullens Smith	07952 992782
St Mary's Church (R.C.)	Vivian Phillips	583598
Tennis Club	Jason Cairns	584581
Workers Educational Assoc.	Brian Gillion	583706
Luncheon Club	Helen Thomson	583255
Doctors Surgery		583387
Silver End Heritage Society	Jackie Nesbitt	07707 084608
Silver End United Football Club	Mark Edgell	584639 Web
Site www.silverendunitedfc.co.uk		
Women's Institute	Brenda Warnes	07931 548193
Community Warden	Jackie Windard	07785 515526
Post Office in Co-op - please note that it closes at Lunchtime 1-2pm		
Closes 1 pm Wednesday and 12.30 pm Saturday		
Library: Tues & Thurs - 2pm to 6pm Saturday 9am to 1pm		

HUNNABALL

Family Funeral Services



Here **whenever** you need us

Funerals | Memorials | Pre-paid Funeral Plans

Hunnaball of Witham

1 Coach House Way, Newland Street, Witham CM8 1YJ

01376 511592

www.hunnaball.co.uk

JANET C DAVIES

Lady Funeral Directors



**Our Ladies
in Hats**

*"funerals with
a gentle touch"*

Funerals | Memorials
Pre-paid Funeral Plans

Janet C Davies of Kelvedon

233 High Street, Kelvedon CO5 9JD

01376 573691

www.hunnaball.co.uk

DRH LANDSCAPES

Est. 1987

Quality Comes 1st

**Garden Landscape and Design – Hard Landscaping – Soft Landscaping
Grounds Maintenance for Private and Commercial Premises**

- Are you planning to redesign and landscape your garden?
- Does your garden just need a little TLC or a complete makeover?
- Are you looking for assistance with regular garden maintenance or perhaps a one-off visit to get things back in order?
- Is your lawn looking tired? Would you like a new replacement lawn or artificial lawn instead?

We are a family run business with over 30 years of experience working in the ever changing world of landscape management, business regulations and horticulture, with full public and employer liability insurance, as well as being a fully registered waste carrier with the Environmental Agency.



OFFICE: 01376 514142

We welcome...



EMAIL: info@drhlandscapes.com

www.drhlandscapes.com

Harcog Centre, 77-83 Maldon Road, Witham, Essex CM8 1HP

